

Attendees: Dave Myra, Heather Simmons-Rigdon, Carol Ready, RC&D; Greg McLaughlin, WWT; DJ Shook, KCCD; Justin Bader, NYCD; Richard Visser, Jennifer Scott, WDFW, David Child, YBB; Henry Fraser, YN; David Gerth, KCT; Patrick Monk, USFWS/BOR; Ken Schuster, Ecology; Stephen Kropp, URS.

1. ADMINISTRATION

- a) Approve Agenda: ✓
- b) March & April Minutes: March Corrections: "2F" Cold Creek (not Coal); "4D" Adjudication Court rejected transfer of water, finding it would increase consumptive use and acreage.
- c) BPA Contracts: In place! Budgets outlined in Agreements.
- d) Local Agreements: Budgets attached; to be signed by RC&D today.
- e) FY 10-11 Contracting Period: FY will be April 1, 2010-March 31, 2011. BPA won't issue solicitation. COTRs will review contracts and carry over to FY 10-11 with ~2.5% COLA increase.
- f) June Yakima Science & Management Conference, June 16-17, 2009, Eburg: 1 hr 20 min dedicated to all things YTAHP: origin, funding, collaboration, projects past, current, proposed. CR would like to update YTAHP metrics and will ask for updates since ~ early 2008 forward. DM will send around e-mail and set meeting to coordinate presentations.

2. UPDATES

a) NYCD (JB)

Swart: Permitting designs completed. Currently working with WDFW and the engineers to address concerns over some design elements and how to approach this project concerning the amount of time the instream structures should stay in place.

North Fork Ahtanum Gauge: We have received and are reviewing a proposed statement of work and a cost estimate from Inter-fluve over engineering of the project. The SOW includes all needed field investigations, hydraulic analysis, and a conceptual alternative analysis with decision matrices. It also includes preparation of final design of chosen alternative and preparation of bidding material.

Cowiche Creek Water Users Association and Yakima Tieton Irrigation District Hookup: District engineers met with YTID to elaborate on further engineering, particularly pipe placement and connection at YTID turnouts. Permitting process for pipe placement and creek crossings begun. A landowner progress meeting with CWWUA was held and answer any questions. We have been working with a few landowners located on the East Phase of the project in determining new alignment of the pipe and turnouts to make sure the system address their needs. We have recently put in an application to the SRFB.

Blue Slough: We have been working with BOR and USFWS on tracking the additional water that BOR has been diverting into the slough. We have also been engaged in assessing habitat and passage condition from Sportsman's State Park to BOR land south of the highway. Currently, there is decent flow of water making its way from floodgate 30 at Sportsman's Park to the Gerdes property. There are many challenging passage issues that we will address in the future throughout the course of the slough.

Fines Diversion: Received permission from the landowner to move forward with the project provided that we realign and pipe the ditch. Waiting to hear back from the irrigator on their continued interest to move forward. Once we have a commitment from the irrigator we will have the JARPA signed by the landowner, incorporate piping as an element of the project, and look for funding for the implementation of the project.

Pump Screen Projects: Cantu, Shceibner, and Kisner pump screens have been installed and tested. All are working perfectly with the systems they were incorporated into.

We are currently working with Jim Pavlick to install an irrigation well as an alternative to a surface water right on Blue Slough that would have required a screen.

We had a landowner meeting with the new landowners of the Mortenson/Mifflin pump screen project. They have expressed great willingness to work with NYCD to install a fish screen as well as a meter.

b) KCCD (DJ)

Currier Creek Diversion: The WCC crew replanted the area that was disturbed during the siphon repair. Maintenance of the entire planting will continue this summer.

Jack and Indian: The construction contract was executed on May 1, 2009. A pre construction conference was held on May 4th and the Notice to Proceed was issued to the contractor on May 7th. A second pre construction conference will be scheduled for late June. That conference will take place on site. The contractor has already started working on the submittals for the project. Construction is expected to take place around the beginning of July.

Lower Reecer: All the landowner agreements and easements are signed. The bids are due 9:00 AM this morning and will be opened at 9:30 AM. We have had a lot of interest; are hoping for some good bids.

Coleman at Nisbet: The engineer is going to add to the designs an overflow pipe from the pumping box to the creek. Once this is added the designs will be final and we will put this project out to bid.

Caribou Creek: The contractor is waiting for an actuator valve to complete the project. One of the fish screens is installed and the other will not be installed until the actuator valve shows up. It will probably take another week or two before the valve shows up.

Cherry Creek: We had a site visit with Less Perkins promoting the Farmers Fish Screen. This was a valuable meeting but the Farmers Fish Screen will not be an appropriate fit for this site. The Farmers Fish Screen works better at a site with more gradient. Paul Cross of RH2 calculated the pumping costs for the landowner who has been reluctant to switch to a pump screen diversion. Anna met with this landowner to talk about offsetting the pumping cost by installing a wind mill on his property.

Coleman-EWC Intersection: We sent out an RFP to seven engineering firms on our on call roster. The proposals are due on June 1st. The proposals will include a feasibility study for water delivery for the downstream water users, preliminary designs including stakeholder meetings, and final designs by April 30, 2010. We will have a twg meeting soon after the proposals are in.

Fogarty Ditch Payne Ring Well: Mark got a bid from a contractor for the construction of this well. The bid was \$17,000 for a 36" i.d. by 30' well. We are still waiting for the point of diversion change from Ecology but are moving ahead anyway. Anna is currently reviewing the Landowner agreement. Once the landowner and the Board approves the landowner agreement this project will go to construction.

Waste Water Treatment Plant: The WCC crew planted another 40 Blue Elderberries at this site this spring. Maintenance of the planting will continue this summer.

Cabin Williams Culvert Replacement: The landowner called us and said that the high water this January did some damage to his stream crossing. I met with Doug from Big R Bridge on site to talk about the cost of a bridge for the site. I applied for a Community Salmon Fund grant to pay for the bridge.

c) KCT (DG)

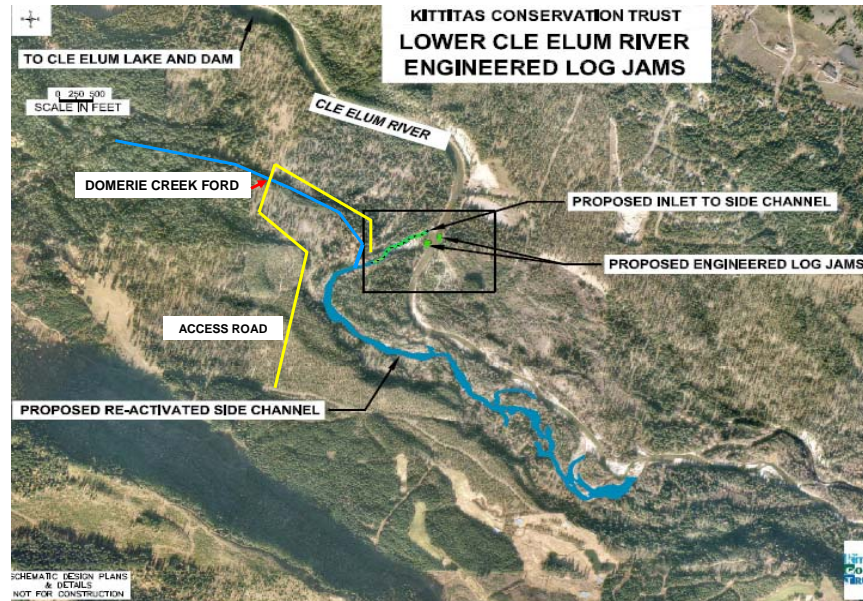
Bruton Diversion (Taneum Crk): Paul Tappel (Fish Consultants, Inc.) has completed 60% design for a roughened channel fish passage solution at Bruton, including Bruton Dam removal. The Bureau of Reclamation intends to use YRWEF funds to finance and build a pipeline to Bruton ditch from KRD south branch canal. BOR will pay the KRD assessment in perpetuity for the Bruton water users' irrigated acres. Technical design issues raised by WA Dept. of Transportation about the I-90 bridge footings at Bruton will be discussed at a meeting on June 2, 2009. In spite of numerous complications we are shooting for a Sept. – Oct. 2009 construction target. Technical Work Meeting was held in Yakima at BOR conf. Room on April 14, 2009. A stock water delivery system was proposed for Bruton that would function year round. NOAA / NMFS commented later that more consultation will be required before they can concur with rough channel designs.

Taneum Canal Co. Diversion: Meeting with Ben George, BOR (Larrick, Isley), ECY, YN (Fraser), and KCT at the canal headworks to investigate possible fish passage solutions. A re-do of the canal's head end was discussed in order to not waste hydraulic head. Further discussions with KRD were suggested by Ben G. and conceptual proposals for changes at TCC could be presented when ready. The dam check boards should not be necessary with removal of the weir pool right after the headgate.

Currier Creek Restoration Plan: *GeoEngineers* has delivered a 41-page aquatic and riparian habitat restoration plan for the Deneen reach property between Hiway 10 and Town Canal. Three segments are described in great detail for meander creation, instream habitat and grade control structures, and riparian and near upland re-vegetation plans. The most upstream segment is designated for development of site specific engineering plans for implementation of conceptual restorations.

Cle Elem River Engineered Log Jams

(ELJs): Major TWG meeting was held March 19, 2009 at the US Forest Service Cle Elum Ranger Dist. Conference room, 10 AM. Participants included representatives from all relevant state and federal agencies. Final designs and specifications are being developed by ENTRIX. Staging of root-wad logs is planned for July – Aug. and construction is scheduled to begin in autumn 2009.



Swauk Creek Restoration: In early June 2009 Herrera Environmental will be developing site specific designs for placement of floodplain and instream structures. Materials may be staged on site in mid-June before permits are acquired and construction begins.

d) RC&D (CR): JS facilitate this month's project coordination meeting. Follow-up meeting between City and Perry Harvester – project continues to move forward. Invoicing SRFB and Ecology.

e) Mid Columbia Fisheries (Rebecca Wassell not in attendance; awaiting the arrive of baby.)

f) DC: Redd surveys available for Nile, Rattlesnake, Oak and Little Creeks (Gary Terreta, USFS, Jim Cumming, WDFW have the data).

3. WDFW – Update (JS): Statement of Work, commented re some missing Work Elements. Lower Reecer: spoke with Dawn B, BPA, environmental compliance (pipeline/fishscreen/meter). DM + JS will review SOW for BPA to be inclusive of all potential projects.

4. ITEMS OF INTEREST

a) RC&D Area Plan (HSR): now through 2014. Would like to update the YTAHP partner list and compile project list for all current and potential projects through 2014, to include project description, metrics and benefits. Would like rough list in June with revisions possible later. It is understood that more details may be available for near-term project and less for out years. (Note: items donated to RC&D are eligible as a tax deductible contribution.)

b) Rootwads from Rusty Marshall: Karen Hodges, Yakima Co, contacted me on ideas on the best way to purchase, pay for, receive delivery of root wads. KH was not in attendance to share her thoughts. The Reecer Project has a bid from RM for 400 pcs, on hold due to funding uncertainty.

c) History of Salmon Display (CR) During a presentation at the Kittitas County Historical Museum, CR asked curator/manger Erin Black if she would be interested in a display of the "History of Salmon" in the Yakima Basin – for example use by Native Americans, Harvesting during 1800s forward, Restoration efforts, population estimates, life history. EB was very interested. The group thought this would be a good idea, but likely outside YTAHP's role (except as a bit of outreach). There must be existing historical data/display materials that could be tapped. GMcL may be able to connect with CWU student to participate – could be good project for them.

5. NEXT MEETING: **July 15, 2009, 9:30-noon, Yakima** : **(NO June mtg)**

NOTE: from Rebecca Wassell - Charles Stephen Wassell III, "Chase" was born at 8:58 p.m. May 24, 2009, weighing 8 lbs 13 1/2 ounces and 20 1/2 inches long!